

TEST REPORT

Applicant : DESA GLOBAL ENDUSTRIYEL URUN. ITH. IHR. SAN. ve TIC. LTD. STI.
Address : asagi yahyalar mahallesi 994 sokak 8-B yenimahalle-ANKARA, TURKEY

Manufacturer : Foshan Unipower Electronic Co., Ltd.
Address : Block 7, No.115, 1st Zhangcha Road, Foshan, Guangdong Province, P.R. China

Product Name : Uninterruptible Power Systems (UPS)
Trade Mark : SINAIDER,DESA,GLOBAL,CLS

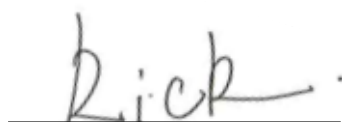
Model No. : SINAIDER-1500VA,UPS-1500VA,D-1500VA
Ratings : Input: 220-240Vac, 50/60Hz, 10A, 1Φ
Output: 220-240Vac, 50/60Hz, 1500VA/900W, 1Φ

Standard : Uninterruptible power systems(UPS)
Part 1: General and safety requirements for UPS
EN 62040-1: 2008+A1:2013

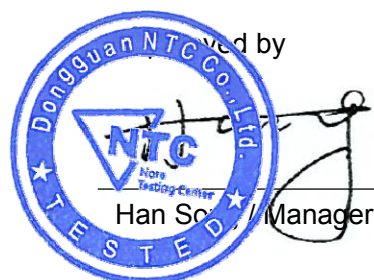
Date of Receiver : July 25, 2017
Date of Test : July 25, 2017 to August 21, 2017
Date of Issue : August 22, 2017
Test Report Form No : NTCS-IEC62040-1-A2-E
Test Result : Pass *

This Test Report is Issued Under the Authority of :

Compiled by



Rick Zheng / Engineer



*Remarks:

The results shown in this test report refer only to the sample(s) tested, this test report cannot be reproduced, except in full, without prior written permission of Dongguan Nore Testing Center Co., Ltd. The report would be invalid without specific stamp of test institute and the signatures of compiler and approver.

Revision History of This Test Report

Report Number	Description	Issued Date
NTC1503172S	Initial Issue	2015-03-28
NTC1503172S-1	Change Applicant: durak elektronik - yusuf durak Change Trade Mark: SINAIDER Change Model No.: SINAIDER-1500VA	2015-07-06
NTC1707753S	Change Applicant , trademark, and add model	2017-08-22

Copy of marking plate:

Brand: SINAIIDER
Model No.: SINAIIDER-1500VA
Capacity: 1500VA/900W
AC Input: 220-240V~,50/60Hz,10A,1Φ
AC Output: 220-240V~,50/60Hz,1500VA,900W,1Φ
Fuse: 10A/250Vac
Serial No.:

Made in China

CAUTION

- 1, Please charge this UPS 24 hours before using the first time to extend the life of the battery.
- 2, Before connecting with a PC, please plug in the AC power supply.



Brand: DESA
Model No.: D-1500VA
Capacity: 1500VA/900W
AC Input: 220-240V~,50/60Hz,10A,1Φ
AC Output: 220-240V~,50/60Hz,1500VA,900W,1Φ
Fuse: 10A/250Vac
Serial No.:

Made in China

CAUTION

- 1, Please charge this UPS 24 hours before using the first time to extend the life of the battery.
- 2, Before connecting with a PC, please plug in the AC power supply.



Brand: GLOBAL
Model No.: UPS-1500VA
Capacity: 1500VA/900W
AC Input: 220-240V~,50/60Hz,10A,1Φ
AC Output: 220-240V~,50/60Hz,1500VA,900W,1Φ
Fuse: 10A/250Vac
Serial No.:

Made in China

CAUTION

- 1, Please charge this UPS 24 hours before using the first time to extend the life of the battery.
- 2, Before connecting with a PC, please plug in the AC power supply.



Brand: CLS
Model No.: UPS-1500VA
Capacity: 1500VA/900W
AC Input: 220-240V~,50/60Hz,10A,1Φ
AC Output: 220-240V~,50/60Hz,1500VA,900W,1Φ
Fuse: 10A/250Vac
Serial No.:

Made in China

CAUTION

- 1, Please charge this UPS 24 hours before using the first time to extend the life of the battery.
- 2, Before connecting with a PC, please plug in the AC power supply.



CAUTION

Risk of electric shock!


No user serviceable parts inside, refer servicing only to qualified service personnel. Do not remove cover!

Lead-acid batteries inside the enclosure. It may cause chemical hazard. The batteries may present a risk of electric shock and energy hazards.

For battery source and dispose, see user's manual.

Risk of explosion battery is replaced by and incorrect type.

Note:

- The **CE** marking and  symbol maybe marked on other outer surface of the plastic enclosure and should be at least 5.0mm and 7.0mm respectively in height.
- The above markings are the minimum requirements required by the safety standard. For the final production samples, the additional markings which do not give rise to misunderstanding may be added.

Summary of testing:

The submitted samples were found to comply with the above standard.

- Tests performed on the bench
- Maximum ambient temperature: +40°C
- Tested for moderate conditions
- Evaluation for use on elevations not exceeding 1000m (see Note of subclause 1.2)

Test item particulars :	
Equipment mobility..... :	<input checked="" type="checkbox"/> movable <input type="checkbox"/> hand-held <input type="checkbox"/> transportable <input type="checkbox"/> stationary <input type="checkbox"/> for building-in <input type="checkbox"/> direct plug-in
Connection to the mains..... :	<input checked="" type="checkbox"/> pluggable equipment <input checked="" type="checkbox"/> type A <input type="checkbox"/> type B <input type="checkbox"/> permanent connection <input type="checkbox"/> detachable power supply cord <input checked="" type="checkbox"/> non-detachable power supply cord <input type="checkbox"/> not directly connected to the mains
Operating condition..... :	<input checked="" type="checkbox"/> continuous <input type="checkbox"/> rated operating / resting time:
Access location :	<input checked="" type="checkbox"/> operator accessible <input type="checkbox"/> restricted access location
Over voltage category (OVC) :	<input type="checkbox"/> OVC I <input checked="" type="checkbox"/> OVC II <input type="checkbox"/> OVC III <input type="checkbox"/> OVC IV <input type="checkbox"/> other:
Mains supply tolerance (%) or absolute mains supply values :	-10% to 6%
Tested for IT power systems :	<input type="checkbox"/> Yes (only for Norway) <input checked="" type="checkbox"/> No
IT testing, phase-phase voltage (V) :	N/A
Class of equipment :	<input checked="" type="checkbox"/> Class I <input type="checkbox"/> Class II <input type="checkbox"/> Class III <input type="checkbox"/> Not classified
Considered current rating of protective device as part of the building installation (A) :	16A
Pollution degree (PD) :	<input type="checkbox"/> PD 1 <input checked="" type="checkbox"/> PD 2 <input type="checkbox"/> PD 3
IP protection class :	IP20
Altitude during operation (m) :	Up to 1000m
Altitude of test laboratory (m) :	below 1000m
Mass of equipment (kg) :	Approximately 10.9kg

Possible test case verdicts:

- test case does not apply to the test object..... : N (N/A)
- test object does meet the requirement..... : P (Pass)
- test object does not meet the requirement..... : F (Fail)

General remarks:

"(see Enclosure #)" refers to additional information appended to the report.
 "(see appended table)" refers to a table appended to the report.
 Throughout this report a comma(point) is used as the decimal separator.
 Standard EN 62040-1:2008 is to be used in conjunction with EN 60950-1:2006, which is referred to in this TRF by "RD".

General product information:

The equipments were general designed for using with information technology equipment.

IEC 62040-1			
Clause	Requirement + Test	Result - Remark	Verdict
4	GENERAL CONDITIONS FOR TESTS		P
4.5	Components		P
	Comply with IEC 62040-1 or relevant component standard	Components, which were found to affect safety aspects, comply with the requirements of this standard or within the safety aspects of the relevant IEC component standards. (see appended table 4.5)	P
1.5.2/RD	Evaluation and testing of components	Components, which are certified to IEC and/or national standards, are applied correctly within their ratings. Components not covered by IEC standards are tested under the conditions present in the equipment.	P
1.5.3/RD	Thermal controls		N
1.5.4/RD	Transformers	Transformers used are suitable for their intended application and comply with the relevant requirements of the standard.	P
1.5.5/RD	Interconnecting cables	The interconnecting cable is carrying only SELV voltage on a low energy level.	P
1.5.6/RD	Capacitors bridging insulation	X2 capacitors provided between lines	P
1.5.7/RD	Resistors bridging insulation	See below.	P
1.5.7.1/RD	Resistors bridging functional, basic or supplementary insulation	Bleeder resistors bridging functional insulation.	P
1.5.7.2/RD	Resistors bridging double or reinforced insulation between a.c. mains and other circuits	No such resistors used.	N
1.5.7.3/RD	Resistors bridging double or reinforced insulation between a.c. mains and antenna or coaxial cable	No such resistors used.	N
1.5.8/RD	Components in equipment for IT power systems	TN power system.	N
4.6	Power interface		P
1.6.1/RD	AC power distribution systems	For connection to TN power system.	P
1.6.2/RD	Input current	(see appended table 4.6)	P
4.6 1.6.4/RD	Neutral conductor	Neutral conductor is basic insulated from earth and body of the equipment.	P

IEC 62040-1			
Clause	Requirement + Test	Result - Remark	Verdict
4.7	Marking and instructions		P
4.7.1	General	Required marking was located on the outside of the equipment.	P
4.7.2 1.7.1/RD	Power rating	See the copy of marking plate	P
	Input rated voltage/range (V).....:	See the copy of marking plate	P
	Input rated current/range (A).....:	See the copy of marking plate	P
	Input symbol for nature of supply (d.c.)	AC input	N
	Input rated frequency/range (Hz).....:	See the copy of marking plate	P
	Number of Input phases and neutral.....:	1φ with neutral	P
	Output rated voltage/range (V)	See the copy of marking plate	P
	Output rated current/range (A)		N
	Output rated power factor, if less than unity, or active power and apparent power or active power and rated current	See the copy of marking plate	P
	Number of output phases and neutral.....:	1φ with neutral	P
	Output rated active power (W or kW)	See the copy of marking plate	P
	Output rated apparent power (VA or kVA)	See the copy of marking plate	P
	Output symbol for nature of supply (d.c.)	AC output	N
	Output rated frequency/range (Hz).....:	See the copy of marking plate	P
	Ambient operating temperature range (°C).....:	0-40°C	P
	Rated short-time withstand current (I_{cw}) or rated conditional short-circuit current (I_{cc})		N
	Manufacturer's name or trademark or identification mark	See the copy of marking plate	P
	Type/model or type reference.....:	See the copy of marking plate	P
	Symbol for Class II equipment only	Class I equipment	N
	Other symbols	Additional symbols or marking do not give rise to misunderstanding.	P
	Certification marks	CE	P
	INSTRUCTIONS FOR UNITS WITH AUTOMATIC BYPASS/MAINTENANCE BYPASS, ADDITIONAL INPUT A.C. SUPPLY, OR EXTERNAL BATTERIES, HAVING TEXT "SEE INSTALLATION INSTRUCTIONS BEFORE CONNECTING TO THE SUPPLY"		N
4.7.3	Safety instructions		P

IEC 62040-1			
Clause	Requirement + Test	Result - Remark	Verdict
4.7.3.1	General	The instruction contains information for operation, installation, servicing, transport, storage and technical data.	P
4.7.3.2	Installation..... :	Installation instructions are available to the user in User Manual.	P
	Location in a restricted access location only :	No a restricted access location.	N
	Permanent connector UPS..... :	Not an permanent equipment	N
	Pluggable type A or Pluggable type B UPS :	Pluggable type A UPS.	P
4.7.3.3	Operation..... :	The equipment is intended to be operated by layperson.	P
4.7.3.4	Maintenance..... :	The instruction of maintenance is only included in the user manual.	P
4.7.3.5	Distribution related backfeed..... :	Not permanently connected equipment	N
4.7.4 1.7.4/RD	Main voltage adjustment :	No voltage selector.	N
	Methods and means of adjustment; reference to installation instructions :		N
4.7.5 1.7.5/RD	Power outlets..... :	For standard power supply outlet, marking was placed beside to shown the maximum load that is permitted to be connected to it.	P
4.7.6 1.7.6/RD	Fuse identification (marking, special fusing characteristics, cross-reference) :	Marking required	P
4.7.7 1.7.7/RD	Wiring terminals	See below	P
1.7.7.1/RD	Protective earthing and bonding terminals :	The earth terminal is marked with the standard earth symbol near the terminal	P
1.7.7.2/RD	Terminals for a.c. mains supply conductors..... :	Power plug used.	N
1.7.7.3/RD	Terminals for d.c. mains supply conductors..... :	Supply by AC source only.	N
4.7.8	Battery terminals :	Internal battery used The marking “+” and “-” for indication of polarity of battery provided.	P
4.7.9 1.7.8/RD	Controls and indicators	See below	P

IEC 62040-1			
Clause	Requirement + Test	Result - Remark	Verdict
1.7.8.1/RD	Identification, location and marking	LED provided to indicate the working condition, located on the top panel. A corresponding statement was provided in the User's Manual.	P
1.7.8.2/RD	Colours	Colors are acceptable due to only used for information (no safety involved even if disregarded).	P
1.7.8.3/RD	Symbols	Symbol for 'standby' (No. 5009) provided on button on the front panel of enclosure	P
1.7.8.4/RD	Markings using figures		N
4.7.10 1.7.9/RD	Isolation of multiple power sources	Provided in the user manual.	N
4.7.11 1.7.2.4/RD	IT power systems	TN power distribution systems	N
4.7.12	Protection in building installation	The protection does not rely upon building installation. The protection is provided by input breaker.	N
	Rated short-time withstand current (I_{cw})		N
	Rated conditional short circuit current (I_{cc})		N
	a) If higher I_{cp} stated ≤ 10 kA		N
	a) If higher I_{cp} stated > 10 kA		N
4.7.13 5.1/RD	High leakage current (mA)	Leakage current of the equipment does not exceed 3.5mA.	N
4.7.14 1.7.10/RD	Thermostats and other regulating devices	No thermostats and other regulating devices	N
4.7.15 1.7.2.1/RD and 1.7.8.1/RD	Language(s)	LED provided to indicate the working condition, located on the top panel. A corresponding statement was provided in the User's Manual.	P
4.7.16 1.7.11/RD	Durability of markings	The marking withstands required tests	P
4.7.17 1.7.12/RD	Removable parts	No required markings placed on removable parts.	P
4.7.18 1.7.13/RD	Replaceable batteries	Detailed instructions provided in the user's manual.	P

IEC 62040-1			
Clause	Requirement + Test	Result - Remark	Verdict
	Language(s)	English.	--
4.7.19 1.7.2.5/RD	Operator access with a tool.....	All areas containing hazard(s) are inaccessible to the operator.	P
4.7.20	Battery	Pluggable equipment type A, UPS with integral batteries.	P
	Clearly legible information	Warning label containing below described information placed on enclosure of UPS or user manual.	P
	Battery type (lead-acid, NiCd, etc.) and number of blocks or cells	Lead acid	P
	Nominal voltage of total battery (V)	(see appended table 4.5)	P
	Nominal capacity of total battery (optional)	(see appended table 4.5)	P
	Warning label	Considered	P
	Instructions	Instructed the replacement of battery type and numbers, terminal torque, personnel knowledgeable about batteries and required precautions and relevant cautions or warnings. Warning label denote energy or electrical shock and chemical hazard and reference to the maintenance, handling and disposal requirements.	P
2.1.1.5/RD	Protection against energy hazards	No energy hazard at operator accessible SELV interfaces.	P
4.7.21 1.7.2.4/RD	Installation instructions	Detailed information regarding power distribution system, special attention to external interfaces.	P

5	FUNDAMENTAL DESIGN REQUIREMENTS		P
5.1	Protection against electric shock and energy hazards		P
5.1.1 2.1.1/RD	Protection for UPS intended to be used in operator access areas	See below.	P
2.1.1.1/RD	Access to energized parts	Checked by test finger and test pin. No accessible hazard energized parts.	P
	Test by inspection	Not accessible	P
	Test with test finger (Figure 2A)	Not accessible	P

IEC 62040-1			
Clause	Requirement + Test	Result - Remark	Verdict
	Test with test pin (Figure 2B)	Not accessible	P
	Test with test probe (Figure 2C)	Not accessible	P
2.1.1.2/RD	Battery compartments	No TNV circuits inside battery compartment.	P
2.1.1.3/RD	Access to ELV wiring	No ELV wiring in operator accessible area.	N
	Working voltage (V_{peak} or V_{rms}); minimum distance through insulation (mm)		--
2.1.1.4/RD	Access to hazardous voltage circuit wiring	Insulation of internal wiring not operator accessible.	N
2.1.1.5/RD	Energy hazards	No energy hazard at operator accessible SELV interfaces.	P
2.1.1.6/RD	Manual controls	No conductive controls or handles or alike provided.	N
2.1.1.7/RD	Discharge of capacitors in equipment	No risk of electric shock.	P
	Measured voltage (V); time-constant (s).....	(see appended table 2.1.1.7/RD)	--
2.1.1.8/RD	Energy hazards – d.c. mains supply	Not connected to DC mains supply.	N
	a) Capacitor connected to the d.c. mains supply		N
	b) Internal battery connected to the d.c. mains supply		N
2.1.1.9/RD	Audio amplifiers in information technology equipment	No audio amplifier	N
5.1.2 2.1.1.5 c) /RD	Protection for UPS intended to be used in service access areas	Checked by inspection, unintentional contact is unlikely during service operations.	N
	Hazardous energy level		N
5.1.3 2.1.1.5 c) /RD	Protection for UPS intended to be used in restricted access areas	Not for restricted access area	N
	Hazardous energy level		N
5.1.4	Backfeed protection	(see appended table 5.1.4)	P
	Shock hazard after de-energization of a.c. input for UPS	See appended table 5.2.1 and Subclause 2.2.3/RD	P
	Measured voltage (V); time-constant (s).....		--
	Description of the construction	For pluggable UPS, backfeed protection achieved by the operation of relays and the relative circuits provided in the a.c. input line.	P

IEC 62040-1			
Clause	Requirement + Test	Result - Remark	Verdict
	Air gap is employed for backfeed protection	The relay provides a contact gap of 1.9 mm minimum between each contact.	P
5.1.5	Emergency switching (disconnect) device	Pluggable equipment type A, no emergency switching device for the load required.	N
5.2	Requirements for auxiliary circuits		P
5.2.1 2.2/RD	Safety extra low voltage circuit - SELV		P
2.2.1/RD	General requirements	The secondary circuits were tested as SELV.	P
2.2.2/RD	Voltages under normal conditions (V) :	Not exceed 42.4V peak or 60Vdc in SELV circuit under normal operation.	P
2.2.3/RD	Voltages under fault conditions (V) :	Single fault cause did not excessive voltage in accessible SELV circuits.	P
2.2.4/RD	Connection of SELV circuits to other circuits ... :	To SELV only	N
5.2.2 2.3/RD	Telephone network voltage circuits - TNV	No TNV circuit	N
2.3.1/RD	Limits		N
	Type of TNV circuits..... :		--
2.3.2/RD	Separation of TNV circuits from other circuits and from accessible parts		N
2.3.2.1/RD	General requirements		N
2.3.2.2/RD	Protection by basic insulation		N
2.3.2.3/RD	Protection by earthing		N
2.3.2.4/RD	Protection by other constructions :		N
2.3.3/RD	Separation from hazardous voltages		N
	Insulation employed..... :		--
2.3.4/RD	Connection of TNV circuits to other circuits		N
	Insulation employed..... :		--
2.3.5/RD	Test for operating voltages generated externally		N
5.2.3 2.4/RD	Limited current circuits	(See appended table 5.2.3)	P
2.4.1/RD	General requirements		P
2.4.2/RD	Limit values	(See appended table 5.2.3)	--
	Frequency (Hz)..... :		--
	Measured current (mA)..... :		--
	Measured voltage (V)..... :		--

IEC 62040-1			
Clause	Requirement + Test	Result - Remark	Verdict
	Measured circuit capacitance (nF or μ F)..... :		--
2.4.3/RD	Connection of limited current circuits to other circuits	SELV circuits as limited current circuit connected to primary via bridging components	P
5.2.4 3.5/RD	External signaling circuits		N
3.5.1/RD	General requirements		N
3.5.2/RD	Types of interconnection circuits		N
3.5.3/RD	ELV circuits as interconnection circuits		N
3.5.4/RD	Data ports for additional equipment		N
5.2.5 2.5/RD	Limited power source	No such circuit	N
	a) Inherently limited output		N
	b) Impedance limited output		N
	c) Regulating network limited output under normal operating and single fault condition		N
	d) Overcurrent protective device limited output		N
	Max. output voltage (V), max. output current (A), max. apparent power (VA)..... :		--
	Current rating of overcurrent protective device (A) .:		--
	Use of integrated circuit (IC) current limiters	No such IC used	--

5.3	Protective earthing and bonding		P
5.3.1	General		P
2.6/RD	Provisions for earthing and bonding	Reliable connection of relevant conductive parts to the PE terminal (Power plug) via green/yellow insulated wires.	P
2.6.1/RD	Protective earthing	Relevant earthing conductive parts reliably connected to PE Pin of Power plug.	P
2.6.2/RD	Functional earthing		P
2.6.3/RD	Protective earthing conductors and protective bonding conductors	Protective bonding conductors have sufficient current-carrying capacity.	P
2.6.3.1/RD	General	Compliance checked. Protective bonding conductors have sufficient current-carrying capacity.	P
2.6.3.2/RD	Size of protective earthing conductors	See sub-clause 2.6.3.4/RD, rated current below 16A.	N

IEC 62040-1			
Clause	Requirement + Test	Result - Remark	Verdict
	Rated current (A), cross-sectional area (mm ²), AWG..... :		—
2.6.3.3/RD	Size of protective bonding conductors	Evaluation by test of sub-clause 2.6.3.4, rated current below 16A.	P
	Rated current (A), cross-sectional area (mm ²), AWG..... :	Comply with 2.6.3.4/RD	—
	Protective current rating (A), cross-sectional area (mm ²), AWG..... :	Comply with 2.6.3.4/RD	—
2.6.3.4/RD	Resistance of earthing conductors and their terminations; resistance (Ω), voltage drop (V), test current (A), duration (min)..... :	(See appended table 5.3)	P
2.6.3.5/RD	Colour of insulation..... :	Yellow-and-Green	P
2.6.4/RD	Terminals		P
2.6.4.1/RD	General	Power plug as protective earth terminal.	P
2.6.4.2/RD	Protective earthing and bonding terminals	Adequate protective earth connection, see also Subclause 2.6.3.4/RD and 3.3/RD.	P
	Rated current (A), type, nominal thread diameter (mm)..... :	Comply with 2.6.3.4/RD	—
2.6.4.3/RD	Separation of the protective earthing conductor from protective bonding conductors	Separate PE and protective bonding by conductor.	P
2.6.5/RD	Integrity of protective earthing	See below.	P
2.6.5.1/RD	Interconnection of equipment	This unit has it's own earthing connection. PE terminals of outlets reliably connected to PE terminal of unit. (Power plug). Green wire terminal of outlet connector to metal chassis by weld.	P
2.6.5.2/RD	Components in protective earthing conductors and protective bonding conductors	There are no switches or overcurrent protective devices in the protective earthing/bonding conductors.	P
2.6.5.3/RD	Disconnection of protective earth	Power plug is considered as possible disconnection. AC input power is cut off before removal of earth pin.	P
2.6.5.4/RD	Parts that can be removed by an operator	Plug, earthing connected before and disconnected after hazardous voltage. No other operator removable parts.	P

IEC 62040-1			
Clause	Requirement + Test	Result - Remark	Verdict
2.6.5.5/RD	Parts removed during servicing	Protective earthed parts cannot be removed in a way which impairs safety.	P
2.6.5.6/RD	Corrosion resistance	No risk of corrosion.	P
2.6.5.7/RD	Screws for protective bonding	Adequate connection of protective bonding	p
2.6.5.8/RD	Reliance on telecommunication network or cable distribution system	Protective earthing is not rely on telecommunication network or cable distribution system.	N
5.3.2 2.6.1/RD	Protective earthing	Reliable connection of relevant conductive parts to the PE terminal (via green/ yellow insulated wires)	P
2.10/RD	Clearances, creepage distances and distances through insulation		P
4.2/RD	Mechanical strength	Earthed or unearthed conductive enclosures do not bridge parts between which a hazardous energy level exists and not contact a bare part at hazardous voltage.	P
5.2/RD	Electric strength		P
5.3.3	Protective bonding	Refer to 2.6.3.4/RD	P
5.4	AC and d.c. power isolation		P
5.4.1	General	Disconnection from the mains supply considered.	P
3.4/RD	Disconnection from the mains supply	Disconnection from the mains supply with power plug	P
3.4.1/RD	General requirement	See below.	P
3.4.2/RD	Disconnect devices	Power plug provided as disconnect device.	P
3.4.3/RD	Permanently connected equipment	Not a permanently equipment.	N
3.4.4/RD	Parts which remain energized	Adequate protection provided to service personnel during backup mode.	P
3.4.5/RD	Switches in flexible cords	None provided.	N
3.4.6/RD	Number of poles - single-phase and d.c. equipment	The disconnect device disconnects both poles simultaneously.	P
3.4.7/RD	Number of poles - three-phase equipment	Single-phase equipment.	N

IEC 62040-1			
Clause	Requirement + Test	Result - Remark	Verdict
3.4.8/RD	Switches as disconnect devices	No switches provided.	N
3.4.9/RD	Plugs as disconnect devices		P
3.4.10/RD	Interconnected equipment	No interconnected equipment	N
3.4.11/RD	Multiple power sources	EUT is pluggable type and receives power from the AC mains and - in case of AC mains failure - from the built-in batteries. No marking required.	N
5.4.2	Disconnect devices	Refer to cl.3.4.2/RD	P

5.5	Overcurrent and earth fault protection		P
5.5.1	General		P
2.7.3/RD	Short-circuit backup protection	Pluggable equipment type A. Building installation is considered as providing short-circuit backup protection.	P
2.7.4/RD	Number and location of protective devices :	Over current protector provided in live conductor	P
2.7.5/RD	Protection by several devices	Only one protection device provided.	N
2.7.6/RD	Warning to service personnel :	No double-pole fusing inside this pluggable equipment type A UPS. Stated in the user's manual.	P
5.5.2	Basic requirements	Equipment relies on over current protector or circuit breaker of the wall outlet protection of the building installation in regard to L to N short-circuit.	P
5.5.3	Battery circuit protection	Protection against over current by circuit breaker and DC fuses.	P
5.5.3.1	Overcurrent and earth fault protection		P
5.5.3.2	Location of protective device	For internal battery bank, the protective devices are directly located behind the supply wire of the DC utility. For the charger circuit, there was no hazardous conditions under any simulated fault conditions.	P

IEC 62040-1			
Clause	Requirement + Test	Result - Remark	Verdict
5.5.3.3	Rating of protective device	Protection against overcurrent by two or three fuses (parallel) in the plus pole of the battery supply circuit of the UPS.	P
5.3.1/RD	Protection against overload and abnormal operation	(see appended table 8.3)	P
5.5.4	Short-time withstand current	1φ with neutral	N
5.5.4.1	General		N
5.5.4.2	Modes of operation		N
5.5.4.3	Test procedure		N
5.5.4.3.1	General application		N
	Rated UPS output current/(r.m.s) (A)		--
	Prospective test current/(r.m.s) (A)		--
	Typical power factor		--
	Initial asymmetric peak current ration (I_{pk} / I_{cw}) :		--
	Minimum duration of prospective test current (cycles 50/60 Hz)		--
5.5.4.3.2	Exemption from testing		P
5.6	Protection of personnel – Safety interlocks		P
5.6.1	Operator protection	No safety interlocks.	N
2.8/RD	General principles		N
2.8.1/RD	Protection requirements	No safety interlocks.	N
2.8.2/RD	Inadvertent reactivation		N
2.8.3/RD	Fail-safe operation		N
2.8.4/RD	Protection against extreme hazard		N
2.8.5/RD	Moving parts		N
2.8.6/RD	Overriding		N
2.8.7/RD	Switches, relays and their related circuits		N
2.8.7.1/RD	Separation distances for contact gaps and their related circuits		N
2.8.7.2/RD	Overload test		N
2.8.7.3/RD	Endurance test		N
2.8.7.4/RD	Electric strength test		N
2.8.8/RD	Mechanical actuators		N
5.6.2	Service person protection	No adjustments or measurements inside the equipment are necessary while the unit is energized.	P

IEC 62040-1			
Clause	Requirement + Test	Result - Remark	Verdict
5.6.2.1	Introduction	Considered.	P
5.6.2.2	Covers	It is unlikely that during the removal of any covers service personnel may touch hazardous voltage or energy.	P
5.6.2.3	Location and guarding of parts	A risk of injury is unlikely for the service personnel.	P
5.6.2.4	Parts on doors	The UPS is designed with only screwed enclosure parts.	N
5.6.2.5	Component access	No component access during operation mode necessary.	N
2.8.3/RD	Fail-safe operation	No inadvertent reactivation	N
5.6.2.6	Moving parts	Unintentional contact with the moving parts is not likely.	P
5.6.2.7	Capacitor banks	The capacitors provided can produce energy level way below 20 joules.	P
5.6.2.8	Internal batteries	The terminals of the battery connections are isolated and covered so that it is unlikely to bridge the terminals of the battery during servicing or its replacement.	P

5.7 2.10/RD	Clearances, creepage distances and distances through insulation		P
2.10.1/RD	General		P
2.10.1.1/RD	Frequency :	Considered	P
2.10.1.2/RD	Pollution degrees :	Pollution degree 2.	P
2.10.1.3/RD	Reduced values for functional insulation	The functional insulation complied with clause 5.3.4/RD	N
2.10.1.4/RD	Intervening unconnected conductive parts	Considered.	P
2.10.1.5/RD	Insulation with varying dimensions	No reduction of distances considered.	N
2.10.1.6/RD	Special separation requirements	Not special separation requirements.	N
2.10.1.7/RD	Insulation in circuits generating starting pulses	No such circuit generating starting pulses.	N
2.10.2/RD	Determination of working voltage	(See appended table 5.7)	P
2.10.2.1/RD	General		P

IEC 62040-1			
Clause	Requirement + Test	Result - Remark	Verdict
2.10.2.2/R D	RMS working voltage		P
2.10.2.3/R D	Peak working voltage		P
2.10.3/RD	Clearances		P
2.10.3.1/R D	General		P
2.10.3.2/R D	Mains transient voltages	Normal transient voltage considered.	P
	a) AC mains supply	2500V _{peak}	P
	b) Earthed d.c. mains supplies	Not intended for d.c. mains supplies	N
	c) Unearthed d.c. mains supplies	Not intended for d.c. mains supplies	N
	d) Battery operation	Internal battery considered.	N
2.10.3.3/R D	Clearances in primary circuits	(see appended table 5.7)	P
2.10.3.4/R D	Clearances in secondary circuits	(see appended table 5.7)	P
2.10.3.5/R D	Clearances in circuits having starting pulses	The circuit will not generating starting pulse.	N
2.10.3.6/R D	Transients from a.c. mains supply	Considered.	P
2.10.3.7/R D	Transients from d.c. mains supply	Not connected to d.c. mains supply.	N
2.10.3.8/R D	Transients from telecommunication networks and cable distribution systems	Not connected to telecommunication networks and cable distribution systems	N
2.10.3.9/R D	Measurement of transient voltage levels	Normal transient voltage considered.	N
	a) Transients from a mains supply		N
	For an a.c. mains supply		N
	For a d.c. mains supply		N
	b) Transients from a telecommunication network :		N
2.10.4/RD	Creepage distances	(see appended table 5.7)	P
2.10.4.1/R D	General	Considered.	P
2.10.4.2/R D	Material group and comparative tracking index		P
	CTI tests	Material group IIIb is assumed to be used.	P
2.10.4.3/R D	Minimum creepage distances	(see appended table 5.7)	P

IEC 62040-1			
Clause	Requirement + Test	Result - Remark	Verdict
2.10.5 /RD	Solid insulation	Solid insulating materials having adequate thickness are provided.	P
2.10.5.1/RD	General	Considered.	P
2.10.5.2/RD	Distances through insulation	(see appended table 5.7)	P
2.10.5.3/RD	Insulating compound as solid insulation	(see appended table 4.5)	P
2.10.5.4/RD	Semiconductor devices	Optocouplers used.	P
2.10.5.5/RD	Cemented joints	No cemented joint.	N
2.10.5.6/RD	Thin sheet material – General	Thin sheet material in form of polyester tape used in transformer.	P
2.10.5.7/RD	Separable thin sheet material	Tapes used in transformers.	P
	Number of layers (pcs) :	3 layers	--
2.10.5.8/RD	Non-separable thin sheet material	Not used.	N
2.10.5.9/RD	Thin sheet material – standard test procedure	Tapes used in transformers.	P
	Electric strength test	(see appended table 5.7)	--
2.10.5.10 /RD	Thin sheet material – alternative test procedure		N
	Electric strength test		--
2.10.5.11 /RD	Insulation in wound components	No such components.	N
2.10.5.12 /RD	Wire in wound components	No such components.	N
	Working voltage :		--
	a) Basic insulation not under stress:		N
	b) Basic, supplementary, reinforced insulation :		N
	c) Compliance with Annex U:		N
	Two wires in contact inside wound component; angle between 45° and 90°:		N
2.10.5.13 /RD	Wire with solvent-based enamel in wound components	No wire with solvent-based enamel in wound components.	N
	Electric strength test		—
	Routine test		N

IEC 62040-1			
Clause	Requirement + Test	Result - Remark	Verdict
2.10.5.14 /RD	Additional insulation in wound components	No additional insulation used.	N
	Working voltage :		—
	- Basic insulation not under stress :		N
	- Supplementary, reinforced insulation :		N
2.10.6/RD	Construction of printed boards	See below.	P
2.10.6.1/RD	Uncoated printed boards	Uncoated printed boards used.	P
2.10.6.2/RD	Coated printed boards	No such boards used.	N
2.10.6.3/RD	Insulation between conductors on the same inner surface of a printed board	No such boards used.	N
2.10.6.4/RD	Insulation between conductors on different layers of a printed board	No such boards used.	N
	Distance through insulation		--
	Number of insulation layers (pcs) :		--
2.10.7/RD	Component external terminations	No such construction.	N
2.10.8/RD	Tests on coated printed boards and coated components	No coated printed boards and components.	N
2.10.8.1/RD	Sample preparation and preliminary inspection		N
2.10.8.2/RD	Thermal conditioning		N
2.10.8.3/RD	Electric strength test		—
2.10.8.4/RD	Abrasion resistance test		N
2.10.9/RD	Thermal cycling	No special insulation in order to reduce distance.	N
2.10.10/RD	Test for Pollution Degree 1 environment and insulating compound		N
2.10.11/RD	Tests for semiconductor devices and cemented joints	Approved opto-couplers provided. No other parts to be tested. (see appended table 4.5)	P
2.10.12/RD	Enclosed and sealed parts		N
6	Wiring, connections and supply		P
6.1	General		P
6.1.1	Introduction	Considered.	P
3.1/RD	General	See below	P

IEC 62040-1			
Clause	Requirement + Test	Result - Remark	Verdict
3.1.1/RD	Current rating and overcurrent protection	Adequate cross sectional areas on internal wiring.	P
3.1.2/RD	Protection against mechanical damage	Wire ways are smooth and free from edges. Wires are adequately fixed to prevent excessive strain on wire and terminals and avoiding damage to the insulation of the conductors.	P
3.1.3/RD	Securing of internal wiring	Internal wirings is secured against excessive strain, loosening of terminals and damage to the conductor insulation.	P
3.1.4/RD	Insulation of conductors	Insulation on internal conductors is considered to be of adequate quality and suitable for the application and the working voltage involved.	P
3.1.5/RD	Beads and ceramic insulators	No beads or similar ceramic insulators on conductors	N
3.1.6/RD	Screws for electrical contact pressure	No screws of insulating material used for electrical connection.	P
3.1.7/RD	Insulating materials in electrical connections	All current carrying and safety earthing connections are metal to metal.	P
3.1.8/RD	Self-tapping and spaced thread screws	No self-tapping and spaced thread screws used.	N
3.1.9/RD	Termination of conductors	Terminations can not become displaced so that clearances and creepage distances can be reduced.	P
	10 N pull test	Break away or pivot on its terminal is unlikely	P
3.1.10/RD	Sleeving on wiring	Sleeves are used as supplementary insulation.	P
6.1.2	Dimensions and rating of busbars and insulated conductors		N

6.2	Connection to power		P
6.2.1	General provisions for connection to power	See below.	P
3.2.2/RD	Multiple supply connections	Single supply connection.	N

IEC 62040-1			
Clause	Requirement + Test	Result - Remark	Verdict
3.2.3/RD	Permanently connected equipment	Not permanently connected equipment. It's a pluggable equipment type A equipment.	N
	Number of conductors, diameter of cable and conduits (mm)		--
3.2.4/RD	Appliance inlets	No appliance inlets use	N
3.2.5/RD	Power supply cords	Certified detachable power supply cord with plug provided.	P
3.2.5.1/RD	AC power supply cords	Certified power cord used.	P
	Type	(See appended table 4.5)	--
	Rated current (A), cross-sectional area (mm ²), AWG	3X0.75 mm ² , 14AWG, 3C	--
3.2.5.2/RD	DC power supply cords	Not connected to DC power supply.	N
3.2.6/RD	Cord anchorages and strain relief	Cord anchorages used. No more than 2mm longitudinal displacement after strain relief test.	P
	Mass of equipment (kg), pull (N)	100N	--
	Longitudinal displacement (mm)	1.4mm	--
3.2.7/RD	Protection against mechanical damage	No parts under this unit likely to damage the power supply cord. Enclosure without sharp edges.	P
3.2.8/RD	Cord guards		P
	Diameter or minor dimension D (mm); test mass (g)		--
	Radius of curvature of cord (mm).....		--
6.2.2	Means of connection	Pluggable UPS type A.	P
	More than one supply connection	Single voltage range supply connection.	N

6.3	Wiring terminals for external power conductors		N
3.3/RD	Wiring terminals for connection of external conductors	No external power conductor provided	N
3.3.1/RD	Wiring terminals		N
3.3.2/RD	Connection of non-detachable power supply cords		N
3.3.3/RD	Screw terminals		N
3.3.4/RD	Conductor sizes to be connected		N

IEC 62040-1			
Clause	Requirement + Test	Result - Remark	Verdict
	Rated current (A), cord/cable type, cross-sectional area (mm ²)..... :		--
3.3.5/RD	Wiring terminal sizes		N
	Rated current (A), type, nominal thread diameter (mm)		--
3.3.6/RD	Wiring terminal design		N
3.3.7/RD	Grouping of wiring terminals		N
3.3.8/RD	Stranded wire		N
7	Physical requirements		P
7.1	Enclosure	The frame or chassis not be used to carry current. And provided adequate protection against risk of fire, electric shock, injury to persons and hazardous energy level.	P
7.2 4.1/RD	Stability		P
	Angle of 10°		P
	Test force (N)		N
7.3 4.2/RD	Mechanical strength		P
4.2.1/RD	General	Tests performed and passed. Results see below. After the tests, unit complied with the requirements of sub-clauses 2.1.1/RD, 2.6.1/RD, 2.10/RD and 4.4.1/RD.	P
4.2.2/RD	Steady force test, 10 N	10 N applied to all components	P
4.2.3/RD	Steady force test, 30 N	No such compartments.	N
4.2.4/RD	Steady force test, 250 N	250N applied to outer enclosure. No energy or other hazards.	P
4.2.5/RD	Impact test	No hazard as a result from steel ball impact test.	P
	Fall test	No hazard as a result from steel ball impact test.	P
	Swing test	No hazard as a result from steel sphere ball swung test.	P

IEC 62040-1			
Clause	Requirement + Test	Result - Remark	Verdict
4.2.6/RD	Drop test; height (mm)	No required for this equipment.	N
4.2.7/RD	Stress relief test	74°C, 7hours	P
4.2.8/RD	Cathode ray tubes	No cathode ray tube.	N
	Picture tube separately certified		—
4.2.9/RD	High pressure lamps	No high pressure lamp provided.	N
4.2.10/RD	Wall or ceiling mounted equipment; force (N) ...	Not for wall or ceiling mounting.	N

7.4	Construction details		P
7.4.1	Introduction		P
4.3.1/RD	Edges and corners	Edges and corners of the enclosure are rounded and smoothed.	P
4.3.2/RD	Handles and manual controls; force (N)..... :		P
4.3.3/RD	Adjustable controls	No adjustable controls.	N
4.3.4/RD	Securing of parts	Mechanical fixings in such a way designed that they will withstand mechanical stress occurring in normal use.	P
4.3.5/RD	Connection by plugs and sockets	No mismatch of connectors.	P
4.3.7/RD	Heating elements in earthed equipment	No heating elements provided.	N
4.3.11/RD	Containers for liquids or gases	No containers for liquid or gases in the equipment	N
4.4/RD	Protection against hazardous moving parts	No such parts.	P
4.4.1/RD	General	Test finger applied to openings. No accessible.	P
4.4.2/RD	Protection in operator access areas	No service access areas	P
4.4.3/RD	Protection in restricted access locations	No service access areas	P
4.4.4/RD	Protection in service access areas	No service access areas	P
4.4.5/RD	Protection against moving fan blades	No service access areas	P
4.4.5.1/RD	General		P
	Not considered to cause pain or injury. a)		N
	Is considered to cause pain, not injury. b)		N
	Considered to cause injury. c)		P
4.4.5.2	Protection for users	Protection against by metal enclosure	P
	Use of symbol or warning		N

IEC 62040-1			
Clause	Requirement + Test	Result - Remark	Verdict
4.4.5.3	Protection for service persons	Protection against by metal enclosure	P
	Use of symbol or warning		N
4.5/RD	Thermal requirements		P
4.5.1/RD	General	See below.	P
4.5.2/RD	Temperature tests	(See appended table 7.7)	P
	Normal load condition per Annex L	See Annex L	--
4.5.3/RD	Temperature limits for materials	(see appended table 7.7)	P
4.5.4/RD	Touch temperature limits	(see appended table 7.7)	P
4.5.5/RD	Resistance to abnormal heat	(see appended table 7.4)	P
7.4.2	Openings	Suitable construction prevent vertical access to bare parts of hazardous voltage. (see appended table 7.4.2)	P
7.4.3	Gas Concentration	For the ventilation of the lead-acid battery refer to table M	P
7.4.4	Equipment movement	No castors provided.	N

7.5 4.7/RD	Resistance to fire		P
4.7.1/RD	Reducing the risk of ignition and spread of flame	See below.	P
	Method 1, selection and application of components wiring and materials	Use of materials with the required flammability classes. (see appended table 7.5)	P
	Method 2, application of all of simulated fault condition tests		N
4.7.2/RD	Conditions for a fire enclosure	See below.	P
4.7.2.1/RD	Parts requiring a fire enclosure	Internal components required a fire enclosure.	P
4.7.2.2/RD	Parts not requiring a fire enclosure	The fire enclosure is required to cover all parts.	N
4.7.3/RD	Materials	See below.	P
4.7.3.1/RD	General	Components and materials have adequate flammability classification.	P
4.7.3.2/RD	Materials for fire enclosures	V-1 or better	P
4.7.3.3/RD	Materials for components and other parts outside fire enclosures	No parts outside the fire enclosure.	N

IEC 62040-1			
Clause	Requirement + Test	Result - Remark	Verdict
4.7.3.4/RD	Materials for components and other parts inside fire enclosures	Internal components except small parts are minimum V-2 material. Batteries have a flammability class of HB or better.	P
4.7.3.5/RD	Materials for air filter assemblies	No air filters in the equipment.	N
4.7.3.6/RD	Materials used in high-voltage components	No parts exceeding 4kV.	N

7.6	Battery location		P
7.6.1	Battery location and installation	Maintenance free batteries used inside the UPS. The batteries are connected by quick connect terminals (no necessary tightening).	P
7.6.2	Accessibility and maintainability	No requirements declared by the battery manufacturer.	P
7.6.3	Distance	The temperature of the electrolyte and the gas emission are within the limits of this standard (see appropriate subclauses).	P
7.6.4	Case insulation	No Ni-Cd battery used inside.	P
7.6.5	Wiring	The protection of connection wiring complies with subclause 3/RD.	P
7.6.6	Electrolyte spillage	Sealed maintenance free batteries provided with an unlikely emission of electrolyte (VRLA type).	P
7.6.7	Ventilation	For the ventilation of the lead-acid battery refer to table M.	P
7.6.8	Charging voltage	Protected against excessive voltages under normal and single fault conditions.	P

7.7	Temperature rise		P
4.5/RD	Thermal requirements		P
4.5.1/RD	General		P
4.5.2/RD	Temperature tests	(see appended table 7.7)	P
	Normal load condition per Annex L		--
4.5.3/RD	Temperature limits for materials	(see appended table 7.7)	P
4.5.4/RD	Touch temperature limits	(see appended table 7.7)	P
4.5.5/RD	Resistance to abnormal heat	(see appended table 7.4)	P

IEC 62040-1			
Clause	Requirement + Test	Result - Remark	Verdict
8	Electrical requirements and simulated abnormal conditions		P
8.1	General provisions for earth leakage		P
5.1.1/RD	General	(see appended table 8)	P
5.1.7/RD	Equipment with touch current exceeding 3,5 mA	The touch current does not exceed 3.5mA.	N
8.2 5.2/RD	Electric strength		P
5.2.1/RD	General	(see appended table 5.7)	P
5.2.2/RD	Test procedure	(see appended table 5.7)	P
8.3	Abnormal operating and fault conditions		P
8.3.1	General		P
5.3.1/RD	Protection against overload and abnormal operation	(see appended table 8.3)	P
5.3.2/RD	Motors	No motor	N
5.3.3/RD	Transformers	(see appended Annex C/RD)	P
5.3.4/RD	Functional insulation.....:	By short-circuit	P
5.3.5/RD	Electromechanical components	No such electromechanical components that will cause hazard	N
5.3.9/RD	Compliance criteria for abnormal operating and fault conditions	See below	P
5.3.9.1/RD	During the tests	No fire or molten metal occurred and no deformation of enclosure during the tests.	P
5.3.9.2/RD	After the tests	No reduction of clearance and creepage distances. Electric strength test is made on functional, basic and reinforced insulation.	P
8.3.2	Simulation of faults	(see appended table 8.3)	P
8.3.3	Conditions for tests	The equipment was tested under normal use and foreseeable misuse conditions.	P
9 6/RD	Connection to telecommunication networks		N
6.1/RD	Protection of telecommunication network service persons, and users of other equipment connected to the network, from hazards in the equipment		N

IEC 62040-1			
Clause	Requirement + Test	Result - Remark	Verdict
6.1.1/RD	Protection from hazardous voltages		N
6.1.2/RD	Separation of the telecommunication network from earth	No telecommunication network circuits	N
6.1.2.1/RD	Requirements		N
	Supply voltage (V)	1.5kV	—
	Current in the test circuit (mA)		—
6.1.2.2/RD	Exclusions		N
6.2/RD	Protection of equipment users from overvoltages on telecommunication networks		N
6.2.1/RD	Separation requirements		N
6.2.2/RD	Electric strength test procedure		N
6.2.2.1/RD	Impulse test		N
6.2.2.2/RD	Steady-state test		N
6.2.2.3/RD	Compliance criteria		N
6.3/RD	Protection of the telecommunication wiring system from overheating		N
	Max. output current (A)		--
3.5/RD	Interconnection of equipment		N
3.5.1/RD	General requirements		N
3.5.2/RD	Types of interconnection circuits		N
3.5.3/RD	ELV circuits as interconnection circuits		N
3.5.4/RD	Data ports for additional equipment		N
2.1.3/RD	Protection in restricted access locations		N
2.3.1/RD	Limits		N
	Type of TNV circuits.....		--
2.3.2/RD	Separation from other circuits and from accessible parts		N
2.3.2.1/RD	General requirements		N
2.3.2.2/RD	Protection by basic insulation		N
2.3.2.3/RD	Protection by earthing		N
2.3.2.4/RD	Protection by other constructions		N
2.3.3/RD	Separation from hazardous voltages		N
	Insulation employed.....		--
2.3.4/RD	Connection of TNV circuits to other circuits		N
	Insulation employed.....		--
2.3.5/RD	Test for operating voltages generated externally		N
2.6.5.8/RD	Reliance on telecommunication network or cable distribution system	Protective earthing does not rely on a telecommunication network or a cable distribution system.	N

IEC 62040-1			
Clause	Requirement + Test	Result - Remark	Verdict
2.10.3.3/RD	Clearances in primary circuits		N
2.10.3.4/RD	Clearances in secondary circuits		N
2.10.4/RD	Creepage distances	Considered.	N
2.10.4.1/RD	General		N
2.10.4.2/RD	Material group and comparative tracking index		N
	CTI tests..... :		—
2.10.4.3/RD	Minimum creepage distances		N

M/RD	Annex M, CRITERIA FOR TELEPHONE RINGING SIGNALS (see 2.3.1/RD)		N
M.1/RD	Introduction		N
M.2 /RD	Method A		N
M.3/RD	Method B		N
M.3.1/RD	Ringing signal		N
M.3.1.1/RD	Frequency (Hz) :		--
M.3.1.2/RD	Voltage (V) :		--
M.3.1.3/RD	Cadence; time (s), voltage (V) :		--
M.3.1.4/RD	Single fault current (mA) :		--
M.3.2/RD	Tripping device and monitoring voltage :		N
M.3.2.1/RD	Conditions for use of a tripping device or a monitoring voltage		--
M.3.2.2/RD	Tripping device		N
M.3.2.3/RD	Monitoring voltage (V) :		N

A/RD	Annex A, Tests for resistance to heat and fire		N
A.1/RD	Flammability test for fire enclosures of movable equipment having a total mass exceeding 18 kg, and of stationary equipment (see 4.7.3.2/RD)		N
A.1.1/RD	Samples..... :		--
	Wall thickness (mm)..... :		--
A.1.2/RD	Conditioning of samples; temperature (°C) :		N
A.1.3/RD	Mounting of samples :		N
A.1.4/RD	Test flame (see IEC 60695-11-3)		N
	Flame A, B, C or D :		--
A.1.5/RD	Test procedure		N
A.1.6/RD	Compliance criteria		N
	Sample 1 burning time (s)..... :		--

IEC 62040-1			
Clause	Requirement + Test	Result - Remark	Verdict
	Sample 2 burning time (s)..... :		--
	Sample 3 burning time (s)..... :		--
A.2/RD	Flammability test for fire enclosures of movable equipment having a total mass not exceeding 18 kg, and for material and components located inside fire enclosures (see 4.7.3.2/RD and 4.7.3.4/RD)		N
A.2.1/RD	Samples, material..... :		--
	Wall thickness (mm)..... :		--
A.2.2/RD	Conditioning of samples; temperature (°C) :		N
A.2.3/RD	Mounting of samples :		N
A.2.4/RD	Test flame (see IEC 60695-11-4)		N
	Flame A, B or C :		--
A.2.5/RD	Test procedure		N
A.2.6/RD	Compliance criteria		N
	Sample 1 burning time (s)..... :		--
	Sample 2 burning time (s)..... :		--
	Sample 3 burning time (s)..... :		--
A.2.7/RD	Alternative test acc. to IEC 60695-11-5, cl. 5 and 9		N
	Sample 1 burning time (s)..... :		--
	Sample 2 burning time (s)..... :		--
	Sample 3 burning time (s)..... :		--
A.3/RD	Hot flaming oil test (see 4.6.2/RD)		N
A.3.1/RD	Mounting of samples		N
A.3.2/RD	Test procedure		N
A.3.3/RD	Compliance criterion		N

B/RD	Annex B, Motor tests under abnormal conditions (see 4.7.2.2/RD and 5.3.2/RD)		N
B.1/RD	General requirements		N
	Position :		--
	Manufacturer :		--
	Type :		--
	Rated values :		--
B.2/RD	Test conditions		N
B.3/RD	Maximum temperatures		N
B.4/RD	Running overload test		N
B.5/RD	Locked-rotor overload test		N
	Test duration (days) :		--
	Electric strength test: test voltage (V) :		--

IEC 62040-1			
Clause	Requirement + Test	Result - Remark	Verdict
B.6/RD	Running overload test for d.c. motors in secondary circuits		N
B.6.1/RD	General		N
B.6.2/RD	Test procedure		N
B.6.3/RD	Alternative test procedure		N
B.6.4/RD	Electric strength test; test voltage (V)		N
B.7/RD	Locked-rotor overload test for d.c. motors in secondary circuits		N
B.7.1/RD	General		N
B.7.2/RD	Test procedure		N
B.7.3/RD	Alternative test procedure		N
B.7.4/RD	Electric strength test; test voltage (V)		N
B.8/RD	Test for motors with capacitors		N
B.9/RD	Test for three-phase motors		N
B.10/RD	Test for series motors		N
	Operating voltage (V)		--
C/RD	Annex C, Transformers (see 1.5.4/RD and 5.3.3/RD)		P
	Position	(See appended table 4.5)	—
	Manufacturer	(See appended table 4.5)	—
	Type	(See appended table 4.5)	—
	Rated values	(See appended table 4.5)	—
	Method of protection.....	Inherent impedance	—
C.1/RD	Overload test		P
C.2/RD	Insulation		P
	Protection from displacement of windings.....	By insulation tapes	P
D/RD	Annex D, Measuring instruments for touch current tests (see 5.1.4/RD)		P
D.1/RD	Measuring instrument	As in figure D.1 used.	P
D.2/RD	Alternative measuring instrument	Not used.	N
E/RD	Annex E, Temperature rise of a winding (see Annex E/RD)		N
F/RD	Annex F, Measurements of clearances and creepage distance (see 2.10/RD and Annex G/RD)		P
G/RD	Annex G, Alternative method for determining minimum clearances		N
G.1/RD	Clearances		N

IEC 62040-1			
Clause	Requirement + Test	Result - Remark	Verdict
G.1.1/RD	General		N
G.1.2/RD	Summary of the procedure for determining minimum clearances		N
G.2/RD	Determination of mains transient voltage (V)		N
G.2.1/RD	AC mains supply		N
G.2.2/RD	Earthed d.c. mains supplies		N
G.2.3/RD	Unearthed d.c. mains supplies		N
G.2.4/RD	Battery operation		N
G.3/RD	Determination of telecommunication network transient voltage (V)		N
G.4/RD	Determination of required withstand voltage (V)		N
G.4.1/RD	Mains transients and internal repetitive peaks ..		N
G.4.2/RD	Transients from telecommunication networks ...		N
G.4.3/RD	Combination of transients		N
G.4.4/RD	Transients from cable distribution systems		N
G.5/RD	Measurement of transient voltages (V)		N
	a) Transients from a mains supply		N
	For an a.c. mains supply		N
	For a d.c. mains supply		N
	b) Transients from a telecommunication network		N
G.6/RD	Determination of minimum clearances		N
H	Annex H, Guidance on protection against ingress of water and foreign objects (see IEC 60529)		N
I	Annex I, Backfeed protection test		P
I.1	General		P
I.2	Test for pluggable UPS	Backfeed relay provided	P
I.3	Test for permanently connected UPS		N
I.4	Load-induced change of reference potential	(See appended table 5.1.4)	P
I.5	Solid-state backfeed protection (see clause 7.1-7.5 of IEC 62040-2 and clause 7.1-7.2 of IEC 62040-3)		N
J/RD	Annex J, Table of electrochemical potentials (see 2.6.5.6/RD)		P
	Metal(s) used	Metals which the combination electrochemical potential is less than 0.6V.	—
K/RD	Annex K, Thermal controls (see 1.5.3/RD and 5.3.8/RD)		N

IEC 62040-1			
Clause	Requirement + Test	Result - Remark	Verdict
K.1/RD	Making and breaking capacity		N
K.2 /RD	Thermostat reliability; operating voltage (V)		N
K.3/RD	Thermostat endurance test; operating voltage (V)		N
K.4/RD	Temperature limiter endurance; operating voltage (V)		N
K.5/RD	Thermal cut-out reliability		N
K.6/RD	Stability of operation		N
L	Annex L, Reference loads		P
L.1	General		P
L.2	Reference resistive load		N
L.3	Reference inductive-resistive load		--
L.4	Reference capacitive-resistive loads		N
L.5	Reference non-linear load		P
L.5.1	General		P
L.5.2	Test method		P
L.5.3	Connection of the non-linear reference load	Worst case power factors as specified by the manufacturer maintained during the relevant tests.	--
M	Annex M, Ventilation of battery compartments		P
M.1	General	Sufficient openings and a suitable arrangement of components (circuit breaker) are provided in such a way that a local concentration of hydrogen and oxygen is not possible. No requirement regarding the separation of operational arcing parts from battery vents/valves.	P
M.2	Normal conditions	See appended table M	P
M.3	Blocked conditions	Block test applied, see appended table 8.3	P
M.4	Overcharge conditions	See appended table M.	P
N	Annex N, Minimum and maximum cross-sections of copper conductors suitable for connection (see 6.3)		N
U/RD	Annex U, Insulated winding wires for use without interleaved insulation (see 2.10.5.4/RD)		N
			—

IEC 62040-1			
Clause	Requirement + Test	Result - Remark	Verdict

V/RD	Annex V, AC POWER DISTRIBUTION SYSTEMS (see 1.6.1/RD)		P
V.1/RD	Introduction	See below.	P
V.2/RD	TN power distribution systems	See sub-clause 1.6.1/RD.	P
V.3/RD	TT power distribution systems		N
V.4/RD	IT power distribution systems		N

4.5	TABLE: Critical components information					P
Object / part No.	Manufacturer/ trademark	Type / model	Technical data	Standard	Mark(s) of conformity ¹⁾	
- Description:	Whole unit					
Plastic material of front panel	CHI MEI CORPORATION	PA-765A(+)	V-0, 85℃, Min. 2.1mm thickness	UL94	UL: E56070	
(Alternative)	LG CHEMICAL LTD.	AF312	V-0, 85℃, Min. thickness 2.1mm	UL94	UL: E67171	
Enclosure	Various	Various	Metal, min. 1.5 mm thickness	EN62040-1	Tested with appliance	
Plug of power cord	YANG HAO ELECTRICAL INDUSTRY Co., Ltd.	YH-E-005	250 16A	VDE0620-1	VDE:40029538	
Flexible cable of power cord	YANG HAO ELECTRICAL INDUSTRY Co., Ltd.	H05VV-F	3X0.75 mm ² Max. Length 2m	VDE0281	VDE:40027125	
(Alternative)	Shenzhen Tongyuan Industrial Co., Ltd.	H05VV-F	3X0.75 mm ² Max. Length 2m	VDE0281	VDE:101980	
(Alternative)	Shenzhen Dongju Wire & Cable Co., Ltd.	H05VV-F	3X0.75 mm ² Max. Length 2m	VDE0281	VDE:129988	
Circuit Fuse	WALTER ELECTRONIC CO LTD	FSD+P	250 10A	UL 248-1	UL: E56092	
Internal wire of input and output	SANSHUI CITY HENGDA ELECTRICAL CO., LTD.	1015	16-18AWG, 600V, 105℃	UL 758	UL: E229361	
Battery wire	SANSHUI CITY HENGDA ELECTRICAL CO., LTD.	1015	12AWG, 105℃ 600V	UL 758	UL: E229361	
Earth wire	SANSHUI CITY HENGDA ELECTRICAL CO., LTD.	1015	16AWG, 600V, 105℃	UL 758	UL: E229361	
Main transformer	FOSHAN OULI ELECTRONIC CO LTD.	4B2KB	Class H insulation 180℃	EN62040-1	Tested with appliance	
- Bobbin	E I dupont Nemours co., Ltd	ZYTEL 101L	133*60/114*70	UL	UL E41938(M)	
- Magnet wire	Roshow group co ltd	AL WIRE	0.5Φ-2.2Φ	UL	UL E215691	
(Alternative)	JIANGXI QIAN CI WIRE&CABLE CO LTD	EI/AI	Class H insulation 180℃	UL	UL E333672	
- Insulation tape	YAHUA STICKING TAPE CO.,LTD	No.1350f-1	0.09*3ts	UL	UL E165111	

(Alternative)	JINGJIANG YAHUA PRESSURE SENSITIVE GLUE CO LTD	CP-3002	180C	UL	UL E165111
Socket outlet (3 PCS)	RICH BRY Co., Ltd.	RG-02	250V 16A	VDE0620-1	VDE 82796
Battery	SHEN ZHEN LEOCH BATTERIES TECHNOLOGY CO LTD	DJW Series	DJW12V-9	UL1989	UL:MH26866
Heat-shrinkable tube	Various	Various	600V, 125 °C, VW-1	UL 224	UL
- Description: Main board					
Relay (RY200, RY201, RY202, RY203, RY204)	NINGBO YINZHOU YONGLIN ELECTRICAL EQUIPMENT CO LTD	YL303EH- 24VDC-S-Z	Contact: 30A, 250V; Coil: 24Vdc	UL 508	UL E233840
X capacitor (C211, C210)	LIAO NING DIYA CAPACITOR CO LTD	MKP-X2	0.1µF, 280V/250V, 100°C min.	UL 60384-14	UL E355933
Opto-coupler	Sharp Corporation	PC817	Dti>0.4mm, 115°C min.	EN60747-5- 2,	VDE: 40008087
Electrolyte capacitor (EC202)	Various	Various	35V, 2200µF, 105 °C min.	EN62040-1	Tested with appliance
Current transformer (CT- 1)	CHUAN SHUN ELECTRIC INDUSTRIAL CO., LTD.	FCS2401-08	130°C	EN62040-1	Tested with appliance
Alternative	FOSHAN OULI ELECTRIC CO., LTD.	FCS2401-08	130°C	EN62040-1	Tested with appliance
Alternative	CHENG ANG ELECTRIC CO., LTD.	FCS2401-08	130°C	EN62040-1	Tested with appliance
DC Fuse (F2, F3)	CHE YEN INDUSTRIAL CO., LTD.	ATY-N	F40A, 32Vd.c.	UL248	UL: E208387
(Alternative)	Various	Various	F40A, 32Vd.c.	UL248	UL
PCB	Nanhai Mei Wah Printed Circuit Based Co., Inc.	RXD-11	V-0, 130°C	UL796	UL E185472
(Alternative)	FOSHAN CITY FENG SHAN TIAN ELECTRIC ASSISTANT LTD.	RXD-11	V-0, 130°C	UL796	UL E355240
(Alternative)	Various	Various	V-0, 130°C	UL796	UL
Supplementary information:					
1) Provided evidence ensures the agreed level of compliance.					

4.6,	TABLE: Electrical Data (in normal conditions)	P
------	---	---

1.6.2/RD						
fuse #	I rated (A)	U (V)	P (W)	P (VA)	I fuse (A)	condition/status
Circuit breaker	---	198V/ 50Hz	1048	1518	7.67	Rated maximum output load
Circuit breaker	---	198V/ 60Hz	1030	1510	7.63	Rated maximum output load
Circuit breaker	10	220V/ 50Hz	1033	1515	6.89	Rated maximum output load
Circuit breaker	10	220V/ 60Hz	1026	1508	6.89	Rated maximum output load
Circuit breaker	10	240V/ 50Hz	1020	1520	6.33	Rated maximum output load
Circuit breaker	10	240V/ 60Hz	1013	1531	6.38	Rated maximum output load
Circuit breaker	---	254V/ 50Hz	1061	1518	5.98	Rated maximum output load
Circuit breaker	---	254V/ 60Hz	1080	1529	6.02	Rated maximum output load
Supplementary information:						

5.1.1 2.1.1.5/RD	TABLE: Max. V, A, VA Test				N
Voltage (rated) (V)	Current (rated) (A)	Voltage (max.) (V)	Current (max.) (A)	VA (max.) (VA)	
--	--	--	--	--	
Supplementary information:					

5.1.1 2.1.1.7/ RD	TABLE: discharge of capacitors in the primary circuit				P
Condition	t calculated (s)	t measured (s)	t u® 0V (s)	Comments	
L-N	---	0.13	2.48	U=372V, 37%U=137.6V, After 1s the voltage=10V.	
Supplementary information: Test for pluggable type A UPS.					

5.1.4	TABLE: Backfeed protection test				P
Condition	Voltage measured (V)			Comments	
	L-N	L-G	N-G		

No load	0.08	1.51	1.43	Battery mode, normal condition
Full load	0.12	1.42	1.38	Battery mode, normal condition
No load	0.07	16.4	16.1	Battery mode, Fault condition (N206 Pin2-3 short circuit)
Full load	0.13	12.6	12.0	Battery mode, Fault condition (N206 Pin2-3 short circuit)
Supplementary information:				

5.2.1 2.2/RD	TABLE: Evaluation Of Voltage Limiting Components In SELV Circuits			P
Component (measured between)		max. voltage (V) (normal operation)		Voltage Limiting Components
		V peak	V d.c.	
Fault test performed on voltage limiting components		Voltage measured (V) in SELV circuits (V peak or V d.c.)		
		--		
		--		
Supplementary information:				

5.2.3 2.4/RD	TABLE: limited current circuits					P
Location	Voltage (V)	Current (mA)	Freq. (kHz)	Limit (mA)	Comments	
Battery mode						
L-N	0.60	0.30	50	0.7	Normal condition	
L-PE	1.18	0.59	98	0.7	Normal condition	
N-PE	0.23	0.12	100	0.7	Normal condition	
L-N	1.00	0.50	50	0.7	Short-circuited R13	
L-PE	6.40	3.20	21.9k	15.33	Short-circuited R13	
N-PE	6.40	3.20	21.9k	15.33	Short-circuited R13	
L-N	0.19	0.095	100	0.7	Short-circuited R220	
L-PE	21.0	10.5	46.7k	32.4	Short-circuited R220	
N-PE	25.2	12.6	46.7k	32.4	Short-circuited R220	
Supplementary information:						
Using the measuring instrument of Annex D and test connect a non-inductive resistor of 2 000Ω.						

5.2.5 2.5/RD	TABLE: Limited Power Sources					N
Circuit output tested:						
Note: Measured Uoc (V) with all load circuits disconnected:						
Component s	Sample No.	Uoc (V)	Isc (A)		VA	
			Meas.	Limit	Meas.	Limit
Supplementary information: Sc=Short circuit, Oc=Open circuit						

5.3 2.6.3.4/RD	TABLE: provisions for protective earthing			P
Location		Resistance measured(mΩ)	Comments	
PE pole to PE terminal of appliance outlet		86	Test with current 32A, 2min Resistance not exceed 100 mΩ.	
supplementary information:				

5.7 2.10.2/RD	Table: Working Voltage Measurement			P
Location		RMS voltage (V)	Peak voltage (V)	Comments
supplementary information: Due to the design of the equipment, no voltages exceed the supply voltage inside the unit. Following voltages are considered: 420Vpeak and 250Vr.m.s.				

5.7 2.10.3/RD	TABLE: Clearance And Creepage Distance Measurements						P
clearance cl and creepage distance dcr at/of:	Up (V)	U r.m.s. (V)	Required cl (mm)	cl (mm)	required dcr (mm)	dcr (mm)	
Primary circuits to PE through:	<420	<250	2.0	See below	2.5	See below	
- appliance plug				>4.5		>4.5	
- appliance outlet				>5.0		>5.0	
Air gap of backfeed relay RY200, RY205.	<420	<250	1.9	>1.9	2.5	>2.5	
Supplementary information:							

5.7 2.10.5.2/ RD	TABLE: Distance Through Insulation Measurements				P
Distance through insulation di at/of:		U r.m.s. (V)	Test voltage (V)	Required di (mm)	di (mm)
Plastic enclosure		<420	3000Vac	0.4	>0.4
Supplementary information: Approved component, for details refer to table 4.5					

5.7 2.10.5	TABLE: Dielectric Strength			P
Test voltage applied between:		Test potential applied (V)	Breakdown / flashover (Yes/No)	
Primary circuits to PE		AC1500	No	
Primary circuits to enclosure		AC3000	No	
Supplementary information:				

7.7 4.5/RD	TABLE: Heating Test			P
	Test voltage (V)..... :	See below		—
	Ambient (°C)..... :	See below		—
Thermocouple Locations		max. temperature measured, (°C)		max. temperature limit, (°C)
Test Voltage	198V/50Hz	254V/50Hz	Battery mode	--
Input wire inside	62.6	61.5	61.7	105
Fuse stents body	80.2	70.3	78.1	85
Conector CN2	85.1	76.7	84.3	Ref.
Relay RY200 coil	93.3	83.7	92.6	110
X-Cap. C211 body	81.0	74.1	80.5	100
Relay RY201 coil	99.8	86.9	99.1	110
Relay RY202 coil	103.0	91.3	102.2	110
Relay RY203 coil	91.5	94.2	91.5	110
Relay RY204 coil	95.0	92.7	94.4	110
X-Cap. C210 body	87.8	84.9	88.7	100
Main Transformer primary wire	93.3	87.3	104.3	105
Main Transformer primary winding	102.3	98.4	115.2	130
Main Transformer secondary wire	99.3	94.9	112.3	105
Main Transformer secondary winding	115.9	116.4	121.4	130

Main Transformer core	113.3	106.0	114.2	Ref.
Transformer CT-1 coil	89.9	88.9	90.2	130
Transformer CT-1 core	89.8	88.9	90.3	Ref.
PCB under T1	90.3	86.6	89.4	130
PCB under F3	65.7	70.7	104.6	130
E-Cap. EC202 body	74.4	69.8	83.9	105
PCB under M201	83.9	80.6	95.1	130
PCB under M202	85.5	81.9	99.7	130
Battery wire	59.0	56.0	83.6	105
Battery body (By the side of Main Transformer)	63.6	60.8	67.2	80
Output wire inside	69.9	68.1	69.5	105
Output socket near "L"	62.0	60.5	62.1	70
Enclosure front inside (near Main Transformer)	59.8	63.2	59.3	95
Enclosure top outside (near Main Transformer)	58.4	59.6	57.5	70
Enclosure side outside (near Main Transformer)	56.3	58.1	56.9	70
Enclosure bottom outside (near Main Transformer)	68.1	63.8	65.2	70
Ambient(°C)	40.0	40.0	40.0	--

Supplementary information:

TABLE: Heating test, resistance method					
Test voltage (V)..... :			--	—	
Ambient, t₁ (°C)..... :			--	—	
Ambient, t₂ (°C)..... :			--	—	
Temperature rise of winding	R₁ (Ω)	R₂ (Ω)	ΔT (K)	Max. dT (K)	Insulation class

Supplementary information:

The temperatures were measured under worst case normal mode defined in 1.2.2.1/RD and as described in sub-clause 1.6.2/RD and at voltages as described above.

With a specified maximum ambient temperature and test temperature of 40 °C, the maximum permitted temperatures are calculated as follows:

Winding components (providing safety isolation):

- Class B T_{max} = 120 °C - 10 °C = 110 °C

7.4 4.5.5/RD	TABLE: Ball Pressure Test of Thermoplastics		P
Allowed impression diameter (mm) :		≤2mm	—
Part	Test temperature (°C)	Impression diameter (mm)	
Conector CN2	125	1.23	
Transformer bobbin of Main transformer	125	0.86	
Transformer bobbin of CT-1	125	0.94	
Supplementary information:			

7.4.2	TABLE: openings		P
Location	Size (mm)	Comments	
Top	---	No openings	
Side	Φ=2.92 mm	Circular openings, 200 provided on the each side. Comply with Figure 4C in 4.6.1/RD, no hazardous live parts exposed to the openings.	
Bottom	---	No openings	
Front	---	No openings	
Back	---	No openings	
Supplementary information:			

7.5 4.7/RD	TABLE: Resistance to fire					P
Part	Manufacturer of material	Type of material	Thickness (mm)	Flammability class	Evidence	
Plastic enclosure	CHI MEI CORPORATION	PA-765A(+)	Min. 2.1	V-0	UL: E56070	
Plastic enclosure	LG CHEMICAL LTD.	AF312	Min.2.1	V-0	UL: E67171	
Supplementary information:						

8 5.1/RD	TABLE: touch current measurement			P
Measured between:		Measured (mA)	Limit (mA)	Comments/conditions
L/N (Input mode)		0.05	3.5	To metal enclosure (Earthing)
L/N (Input mode)		0.01	0.25	To non-conductive parts
L/N (Battery mode)		0.01	3.5	To metal enclosure (Earthing)
L/N (Battery mode)		0.01	0.25	To non-conductive parts
Supplementary information:				

8.3 5.3/RD	TABLE: Fault condition tests					P
	Ambient temperature (°C) : 40°C					—
	Power source for EUT: Manufacturer, model/type, output rating : --					—
Component No.	Fault	Supply voltage (V)	Test time	Fuse #	Fuse current (A)	Observation
Ventilation	Block	240	2h30min	Circuit breaker	--	Apparatus normal operation, until temperature stable, no hazards, no damage. The max. temperature: Main Transformer primary winding :121.5°C; Main Transformer secondary winding:133.7°C; Transformer CT-1 coil:102.0°C.
Ouput	S-C	240	10min	Circuit breaker	--	Apparatus shutdown immediately, No damage, no hazards.
Ouput	S-C	Stored energy mode	10min	Circuit breaker	--	Apparatus shutdown immediately, No damage, no hazards.
Ouput	O-L	240	1.2h	Circuit breaker	--	Unit alarmed when increased the output to 1.1 times the rated, and shutdown when increased the output to 1.2 times the rated. No hazard.
Ouput	O-L	Stored energy mode	1.0h	Circuit breaker	--	Unit alarmed when increased the output to 1.1 times the rated and shutdown until the empty of battery. No hazard.
M201 PinD-S	S-C	240	10min	F1	0.45	Apparatus shutdown immediately, M201A, M201B, M201C damage, no hazards.
M202C PinD-S	S-C	240	10min	F1	0.45	Apparatus shutdown immediately, M201A, M201B, M201C damage, no hazards.
EC203	S-C	240	10min	F1	0.12	Apparatus shutdown immediately, DC fuses open, no hazards.
Main T RED to BLK	S-C	240	10min	F1	0.45	Apparatus shutdown immediately, No damage, no hazards.
Supplementary information:						

C.2/RD	TABLE: transformers							P
Loc.	Tested insulation	Working voltage peak / V (2.10.2)	Working voltage rms / V (2.10.2)	Required electric strength (5.2)	Required clearance / mm (2.10.3)	Required creepage distance / mm (2.10.4)	Required distance thr. insul. (2.10.5)	
Loc.	Tested insulation			Test voltage/ V	Measured clearance / mm	Measured creepage dist./ mm	Measured distance thr. insul. / mm; number of layers	
Supplementary information:								

C.2/RD	TABLE: transformers	P
Transformer: Construction/winding diagram:		

M	Ventilation of battery compartments	P
	The required dimension for the ventilation openings will be calculated with the following formula:	
	$A \geq Q/360 \text{ [m}^2\text{]}$ with $Q = 0.054 * n * I * C$	
	where:	
	Q : airflow in m ³ /h	
	n : number of battery cells	
	I : constant factor (0,2A/100Ah for valve regulated lead acid batteries)	
	C : is the battery nominal capacity in Ah at the 10h discharge rate	
	With the specific data for the UPS the following dimension for the ventilation openings is required:	
	n : 6 cells per battery (total: 12 for model V-2000)	
	C : 9 Ah	
	$A \geq (0.054 * n * 0.2 \text{ A/100 Ah} * C)/360$ $A \geq 0.324 \text{ cm}^2$	
	Verdict	
	The size of ventilation openings in battery cabinet exceeds the required airflow by far (as well as the UPS).	

Photo documentation

Photo 1

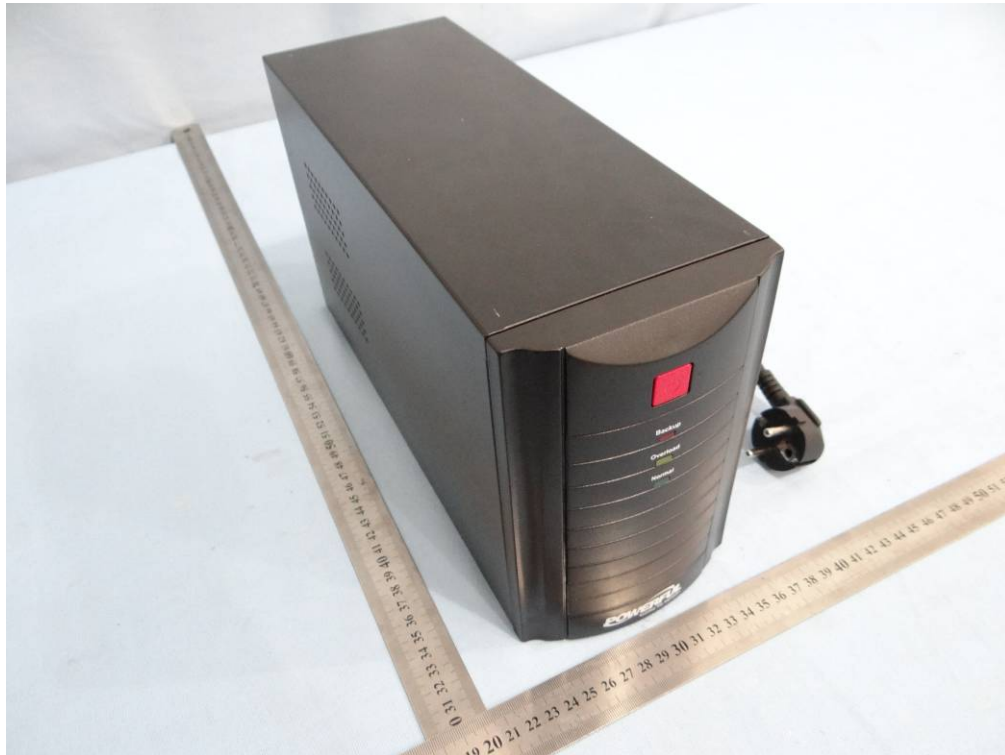


Photo 2



Photo 3

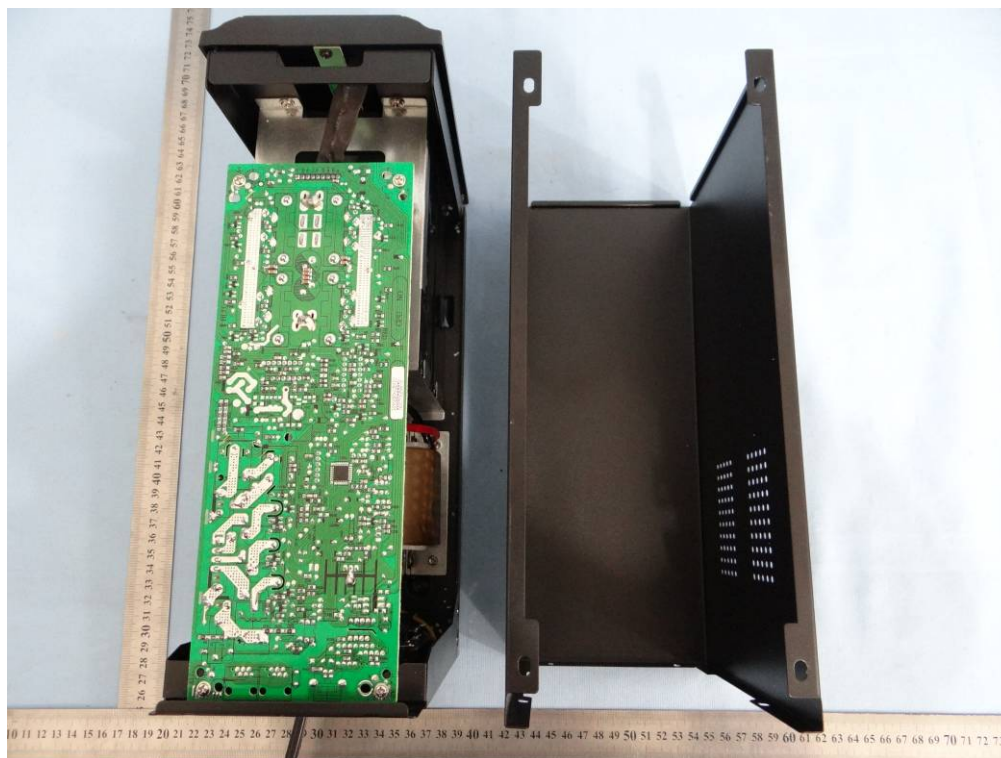


Photo 4

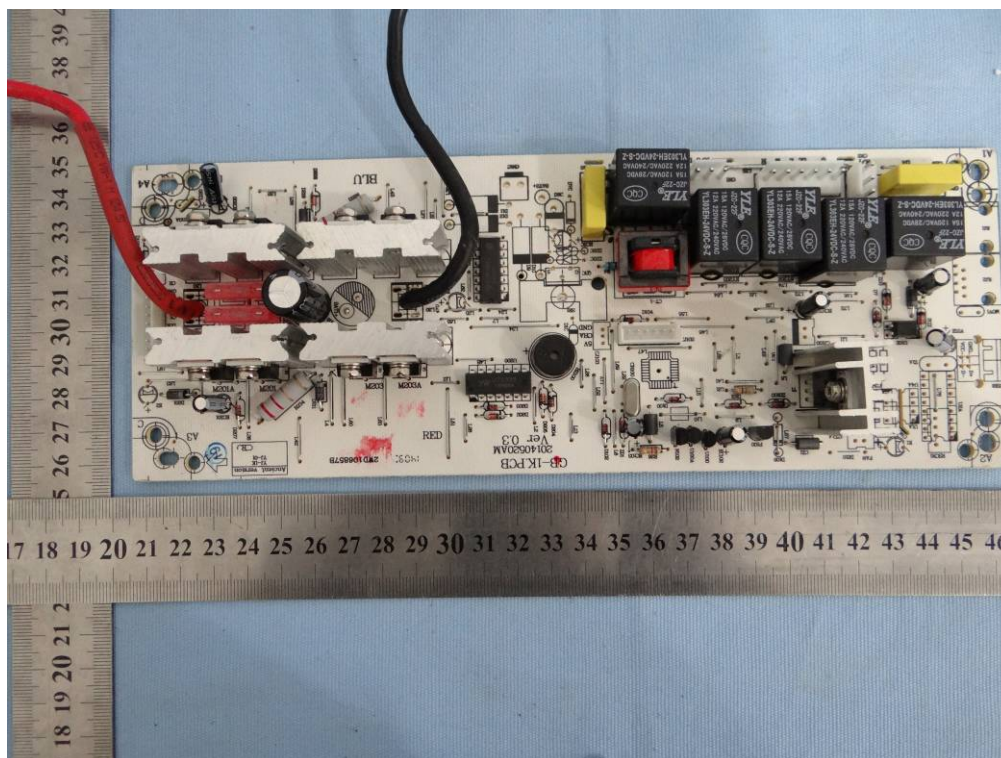


Photo 5

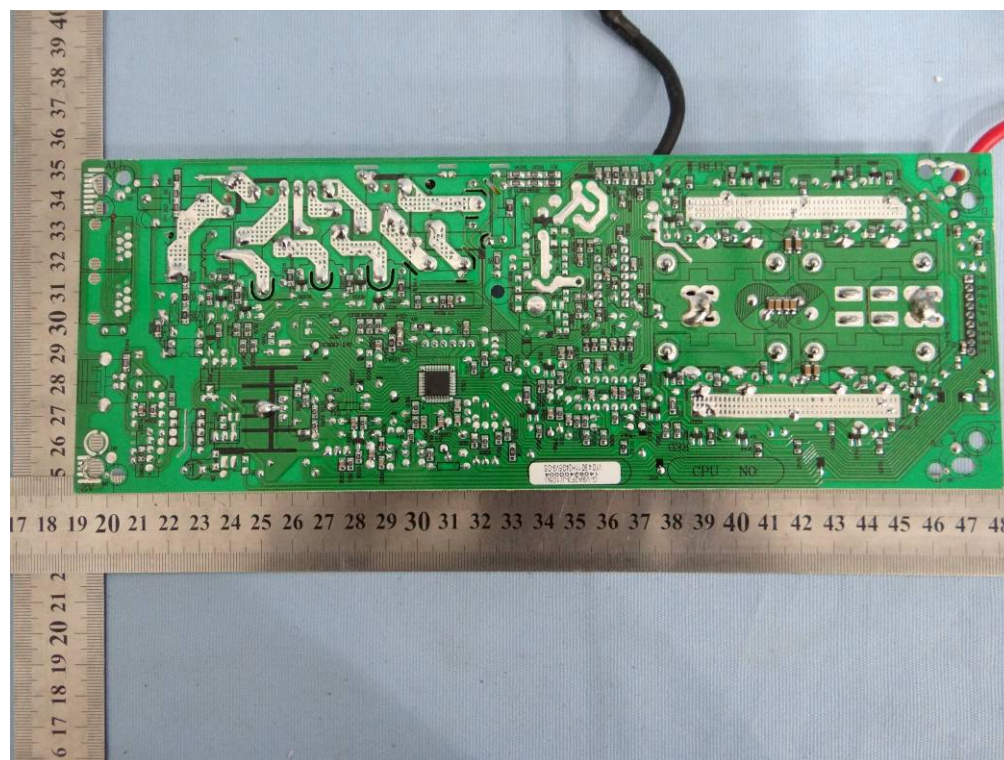


Photo 6



Photo 7



Photo 8

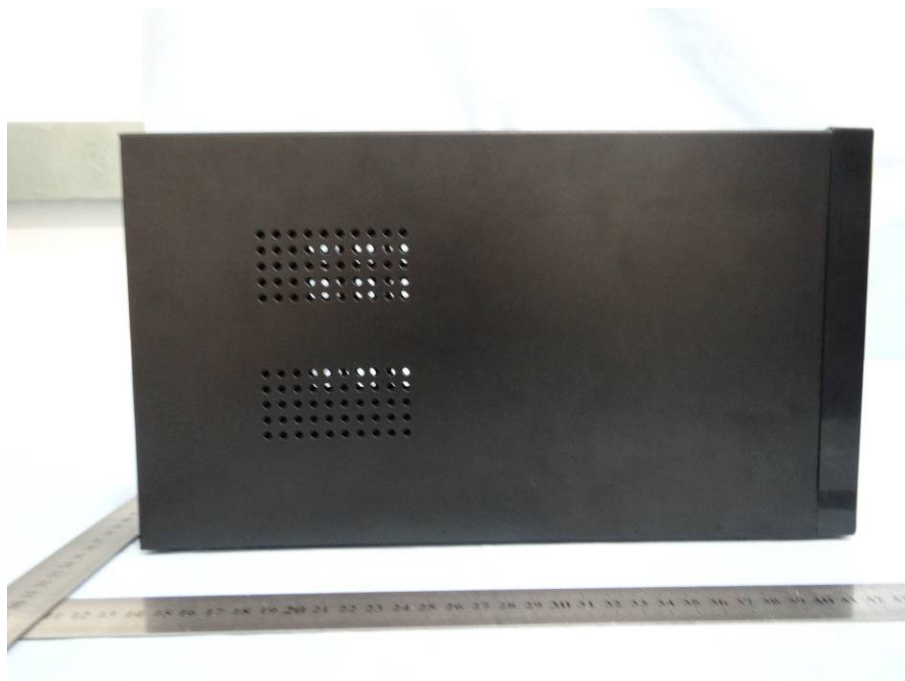


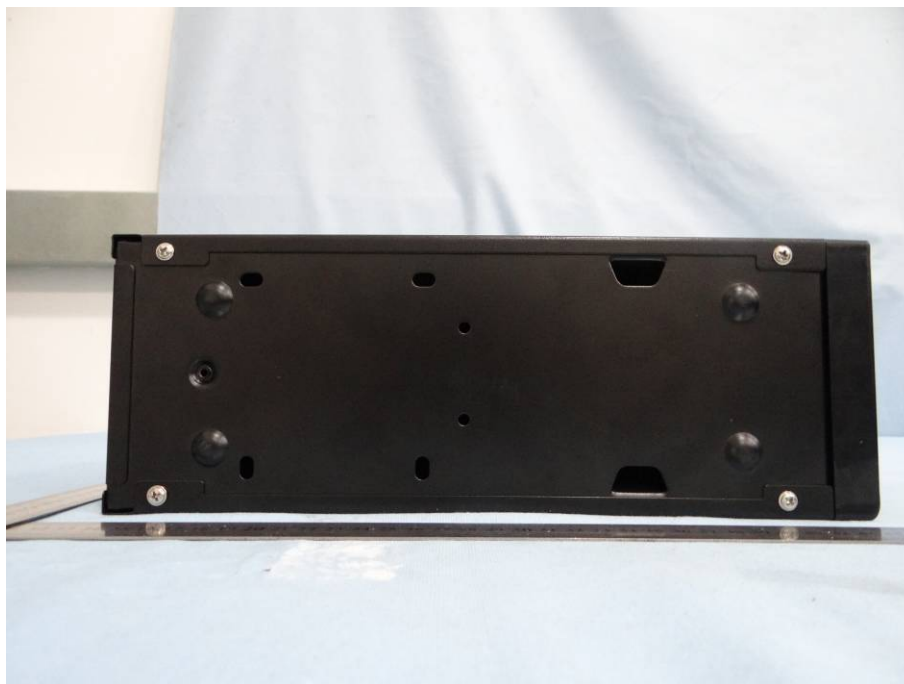
Photo 9



Photo 10



Photo 11



--- END OF THIS REPORT---